



**India Meteorological Department  
(Ministry of Earth Sciences)**

**NATIONAL BULLETIN NO. 12 (BOB/10/2022)**

**TIME OF ISSUE: 1430 HOURS IST**

**DATED: 24.12.2022**

**FROM: INDIA METEOROLOGICAL DEPARTMENT (FAX NO. 24643965/24699216/24623220)**

**TO: CONTROL ROOM, NDM, MINISTRY OF HOME AFFAIRS (FAX.NO. 23093750)**

**CONTROL ROOM NDMA (FAX.NO. 26701729)**

**CABINET SECRETARIAT (FAX.NO.23012284, 23018638)**

**PS TO HON'BLE MINISTER FOR S & T AND EARTH SCIENCES (FAX NO.23316745)**

**SECRETARY, MOES (FAX NO. 24629777)**

**H.Q. (INTEGRATED DEFENCE STAFF AND CDS) (FAX NO. 23005137/23005147)**

**DIRECTOR GENERAL, DOORDARSHAN (23385843)**

**DIRECTOR GENERAL, AIR (23421105, 23421219)**

**PIB MOES (FAX NO. 23389042)**

**UNI (FAX NO. 23355841)**

**D.G. NATIONAL DISASTER RESPONSE FORCE (NDRF) (FAX NO. 26105912, 2436 3260)**

**DIRECTOR, PUNCTUALITY, INDIAN RAILWAYS (FAX NO. 23388503)**

**CHIEF SECRETARY, TAMIL NADU (FAX NO 044-25672304)**

**CHIEF SECRETARY, ANDHRA PRADESH (FAX NO. 0863-2441029, 08645-246600)**

**CHIEF SECRETARY, PUDUCHERRY (FAX NO 0413-2334145)**

**ADMINISTRATOR, ANDAMAN & NICOBAR ISLANDS (FAX NO. 03192- 232656)**

**CHIEF SECRETARY, KARNATAKA (FAX NO. 080-22258913)**

**CHIEF SECRETARY, KERALA (FAX NO. 0471-2327176)**

**ADMINISTRATOR, LAKSHADWEEP ISLANDS (FAX NO. 0413-262184)**

**Sub: Depression over Southwest Bay of Bengal**

The Depression over Southwest Bay of Bengal moved west-southwestwards with a speed of 15 kmph during past 06 hours and lay centered at 1130 hours IST of today, the 24<sup>th</sup> December over the same region near latitude 10.5°N and longitude 83.7°E about 340 km northeast of Trincomalee (Sri Lanka), 420 km east of Nagappattinam (Tamil Nadu) and 470 km east-southeast of Chennai (Tamil Nadu).

It is likely to move further west-southwestwards and reach near Sri Lanka coast by 25<sup>th</sup> morning. Thereafter, it would continue to move west-southwestwards across Sri Lanka and reach Comorin Area and neighbourhood by 26<sup>th</sup> morning.

**Warnings:**

**(i) Rainfall warning (Graphics enclosed)**

- Light to moderate rainfall at many places with heavy rainfall at isolated places is likely over south coastal Tamil Nadu on 25<sup>th</sup> & 26<sup>th</sup> December 2022.
- Light to moderate rainfall at a few places with heavy rainfall at isolated places is likely over south Kerala on 26<sup>th</sup> December 2022.
- Light to moderate rainfall at many places with heavy rainfall at isolated places is likely over Lakshadweep Islands on 27<sup>th</sup> December 2022.

**(ii) Wind warning (Graphics enclosed):**

**Southwest Bay of Bengal along & off Tamil Nadu and Sri Lanka coasts:**

Squally wind speed reaching 45-55 kmph gusting to 65 kmph is likely to prevail till 25<sup>th</sup> December morning becoming 40-50 kmph gusting to 60 kmph till 26<sup>th</sup> morning and decrease thereafter.

**Adjoining areas of southeast & westcentral Bay of Bengal:**

Squally weather with wind speed reaching 40-50 kmph gusting to 60 kmph is likely to prevail on 24<sup>th</sup> December and decrease thereafter.

**Gulf of Mannar and Comorin Area along & off south Tamil Nadu & west Sri Lanka coasts:**

Squally weather with wind speed reaching 40-50 kmph gusting to 60 kmph is likely to prevail on 24<sup>th</sup> December becoming squally wind speed reaching 45-55 kmph gusting to 65 kmph during 25<sup>th</sup> and 26<sup>th</sup> December.

**Lakshadweep Islands & adjoining Southeast Arabian Sea:**

Squally weather with wind speed reaching 40-50 kmph gusting to 60 kmph is likely to prevail on 27<sup>th</sup> December.

**Southeast Arabian Sea & adjoining Lakshadweep Islands:**

Squally weather with wind speed reaching 40-50 kmph gusting to 60 kmph is likely to prevail on 28<sup>th</sup> December.

**Sea condition:****Southwest Bay of Bengal along & off Tamil Nadu and Sri Lanka coasts:**

Sea condition is likely to be rough to very rough till 26<sup>th</sup> December morning and improve thereafter.

**Adjoining areas of southeast & westcentral Bay of Bengal:**

Sea condition is likely to be rough on 24<sup>th</sup> December and improve thereafter.

**Gulf of Mannar and Comorin Area along & off south Tamil Nadu & west Sri Lanka coasts:**

Sea condition is likely to be rough to very rough during 25<sup>th</sup> and 26<sup>th</sup> December.

**Lakshadweep Islands & adjoining Southeast Arabian Sea:**

Sea condition is likely to be rough to very rough on 27<sup>th</sup> December.

**Southeast Arabian Sea & adjoining Lakshadweep Islands:**

Sea condition is likely to be rough on 28<sup>th</sup> December.

**Fishermen Warning (Graphics Enclosed):**

Fishermen are advised not to venture into

- Southwest Bay of Bengal and along & off Sri Lanka coast on 24<sup>th</sup> & 25<sup>th</sup> December.
- Adjoining areas of southeast & westcentral Bay of Bengal on 24<sup>th</sup> December.
- Gulf of Mannar, Comorin Area and along & off south Tamil Nadu and west Sri Lanka coasts during 24<sup>th</sup>-26<sup>th</sup> December.
- Sea areas of Lakshadweep Islands & adjoining Southeast Arabian Sea on 27<sup>th</sup> December.
- Sea areas of Southeast Arabian Sea & adjoining Lakshadweep Islands on 28<sup>th</sup> December.

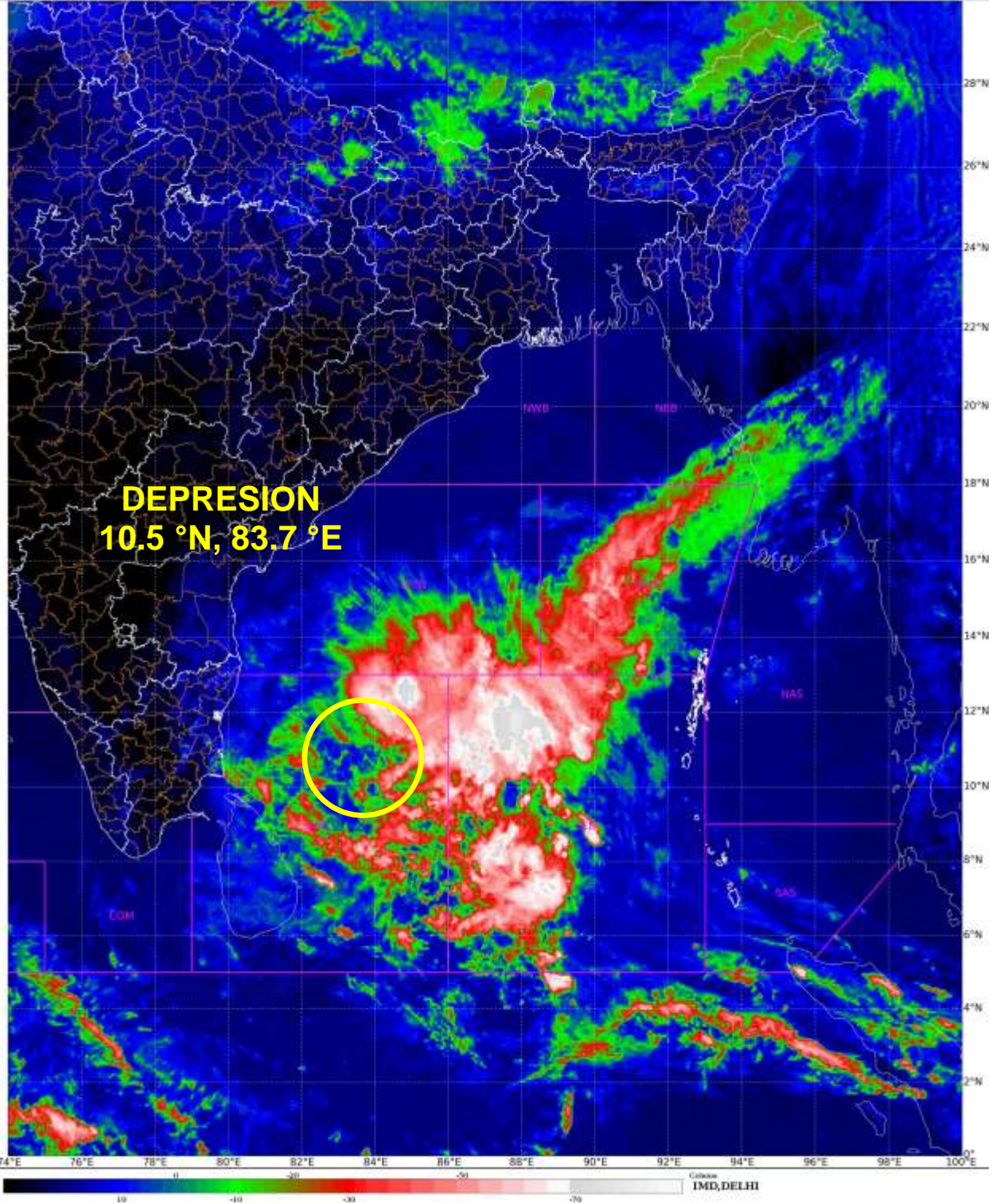
**The System is continuously being monitored and next bulletin will be issued at 2030 hours IST of today, the 24<sup>th</sup> December, 2022.**

(M. Sharma)

Scientist D, Cyclone Warning Division, New Delhi

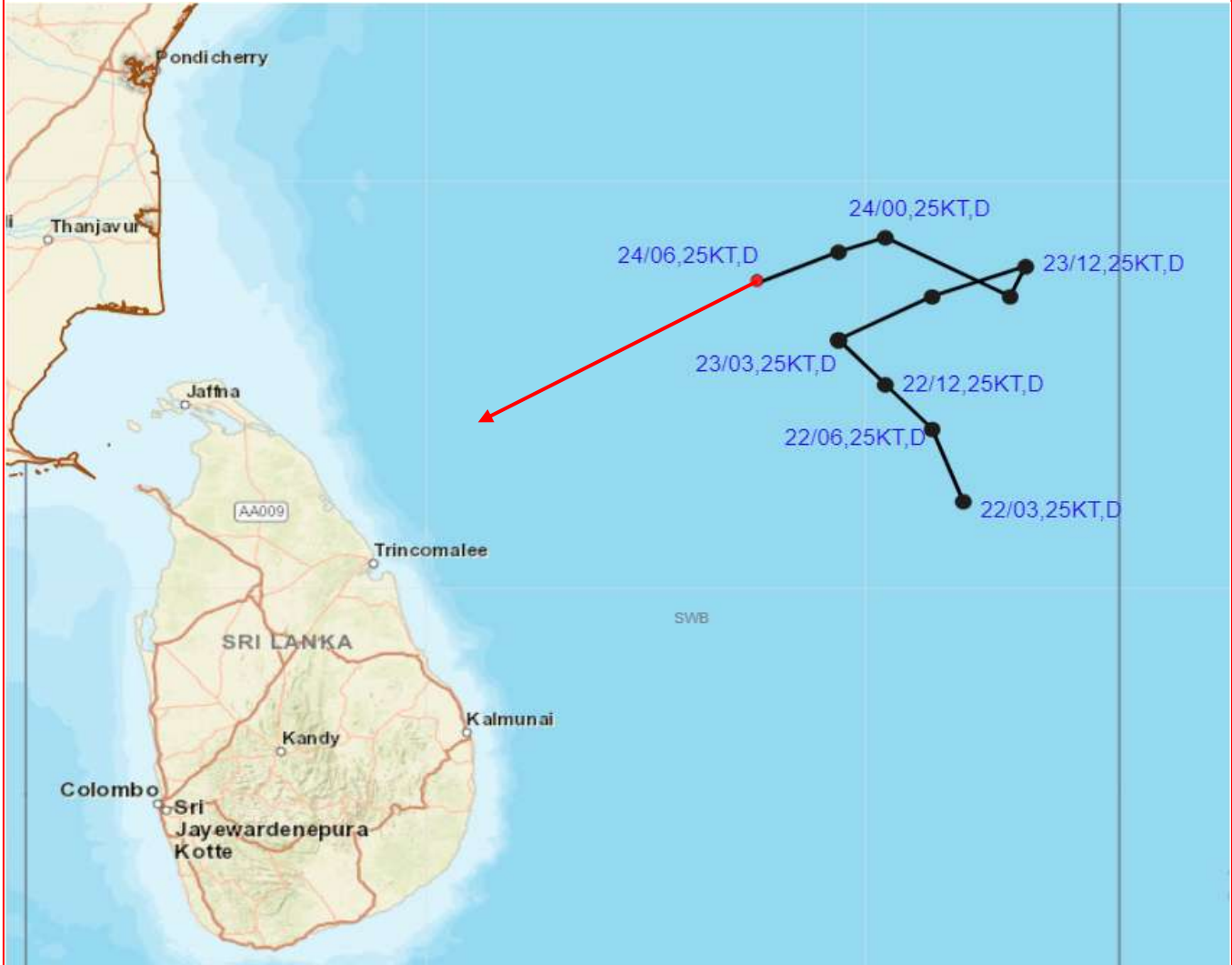
*Copy to: ACWC Mumbai & Chennai/ CWC Ahmedabad/ CWC Thiruvananthapuram/ MC Goa*

**LEGEND: Heavy Rainfall:** 64.5 to 115.5mm, **Very Heavy Rainfall:** 115.6 to 204.4mm **Most Places:** more than 76% of total stations, **Isolated Places:** Less than 25% of total





## OBSERVED AND FORECAST TRACK OF DEPRESSION OVER SOUTHWEST BAY OF BENGAL BASED ON 0600 UTC OF 24<sup>th</sup> DECEMBER, 2022



**DATE/TIME IN UTC**

IST=UTC + 0530

L: LOW PRESSURE AREA

WML: WELL MARKED LOW PRESSURE AREA

D: DEPRESSION (17-27 KT)

DD: DEEP DEPRESSION (28-33 KT)

CS: CYCLONIC STORM (34-47 KT)

SCS: SEVERE CYCLONIC STORM (48-63KT)

VSCS: VERY SEVERE CYCLONIC STORM (64-89 KT)

ESCS: EXTREMELY SEVERE CYCLONIC STORM (90-119 KT)

SuCS: SUPER CYCLONIC STORM ( $\geq 20$  KT)



LESS THAN 34 KT



34-47 KT



$\geq 48$  KT



OBSERVED TRACK

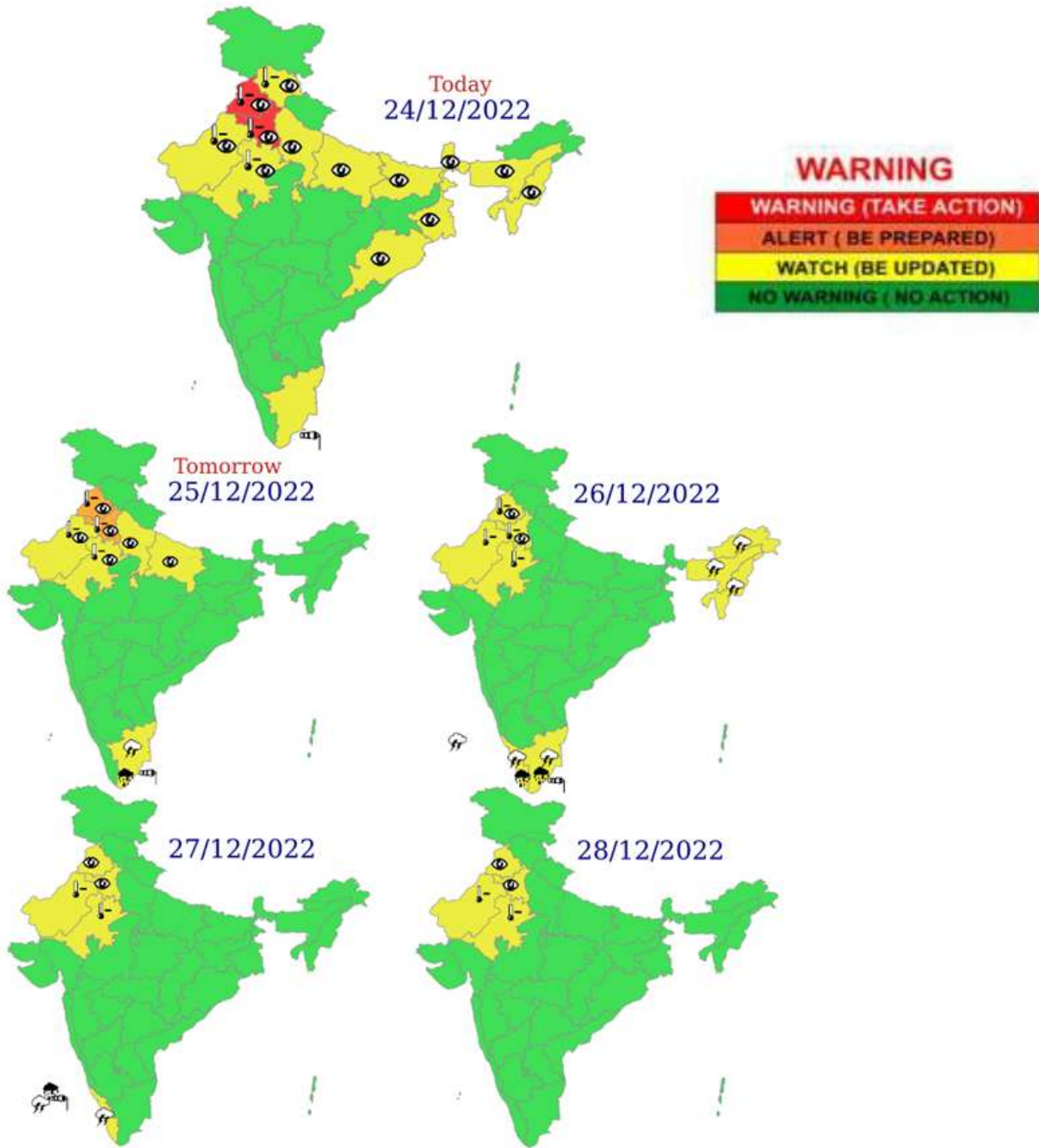


FORECAST TRACK



CONE OF UNCERTAINTY

# WEATHER WARNING GRAPHICS



- |  |  |  |  |
|--|--|--|--|
|  Heavy Rain   |  Heavy Snow |  Thunderstorm |  Dust Storm   |
|  Strong Winds |  Visibility |  Cyclone      |  Squall/ Hail |
|  Frost        |  Cold Wave  |  Heat Wave    |  Sea State    |

## Fishermen warning graphics

Day 1: 24.12.2022/11:30AM to 25.12.2022/05:30AM



Day 2: 25.12.2022/05:30AM to 26.12.2022/05:30AM



Day 3: 26.12.2022/05:30AM to 27.12.2022/05:30AM



Day 4: 27.12.2022/05:30AM to 28.12.2022/05:30AM



Day 5: 28.12.2022/05:30AM to 29.12.2022/05:30AM



Squally WX with wind speed 40-50 kmph gusting to 60 kmph

Squally wind speed 45-55 kmph gusting to 65 kmph

**Fishermen are advised not to venture into the marked areas.**